

EASY-CHANGE INSTALLATION INSTRUCTIONS

For Deluxe Hardware Kit by CDC

Please read all instructions before beginning.

For proper installation of Wood Storm/Screen Doors, we recommend using the "DELUXE HARDWARE KIT" offered by The Combination Door Company. The kit includes everything you need for quick, correct installation of your new door including lockset, hinges, heavy-duty door closer, and safety chain.

Trim top of door to match the top of your entryway with a fine tooth circular saw.

1. Place door in entryway with the Easy-Change locking device to the inside of opening. Allow an 1/8" gap around the top and sides of the door and a 3/16" gap at the bottom. A plane may be used to take a small amount of wood off the sides of the door. A circular saw should be used to trim the bottom and large amounts off the sides of the door.

2. Once the door is fitted, place a shim under the door to give an 1/8" reveal on the top and sides.

4. INSTALLING HINGES:

The hinges may be surface-mounted, mortised, or half-mortised.

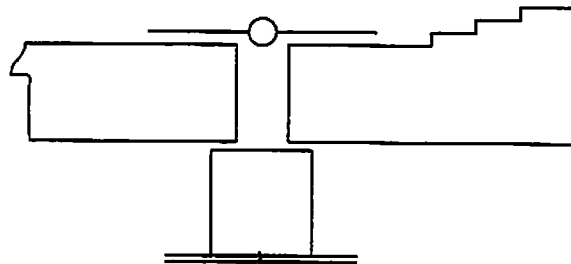
SURFACE MOUNTING: The hinges will be mounted flat with the screws entering from the outside of the door and jamb. Place one hinge 6" from the top and one hinge 6" from the bottom of the door. Make sure that you have an 1/8" gap between the door and the jamb. Mark the holes and drill 1/8" holes, being careful not to drill through the door. Screw the two hinges on. Center the other hinge between the top and bottom hinges. Repeat installation for center hinge.

MORTISED: The hinges will be mounted on the edge of the door and the edge of the jamb. Start by marking the top and bottom hinges 6" from each end. Take door off and set it on its side. Place a hinge at each location on the edge of the door and trace. With a wood chisel, tap around the tracing to a depth equal to the thickness of the hinge. Next, chisel out the area where the hinge will be, making sure not to go deeper than the thickness of the hinge. Place the hinge on to fit snugly. Install hinge. Repeat for remaining hinges. After the remaining hinges have been installed on the door, place the door in the opening and mark the top and bottom of each hinge. Remove pins from the hinges and trace the hinges in the opening. Repeat the procedure for chiseling on the jamb as you did on the door. Install hinges. Place the door in opening and replace the pins.

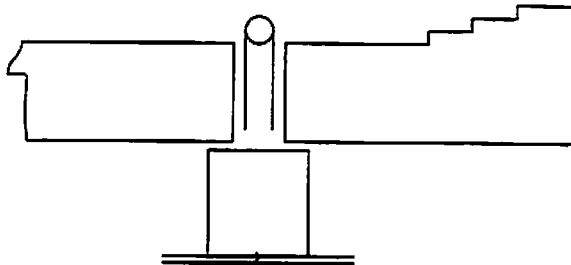
HALF-MORTISED: Use procedures from surface mounted and mortised. Pull hinge pin and reverse one leaf. Surface mount can be on either the door or the exterior trim.

TOOLS REQUIRED:

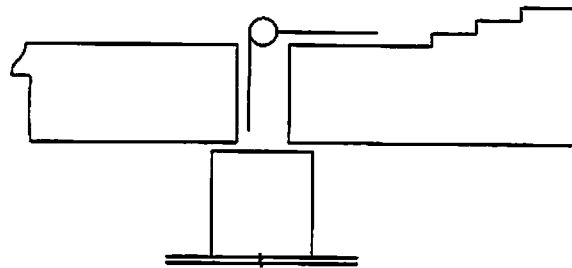
Phillips Screwdriver, Slot Screwdriver, Wood Chisel, Drill and Bits, Hammer, Fine Tooth Circular Saw, and Plane.



Surface Mounted Hinge



Mortised Hinge



Half Mortised Hinge

5. Remove the door from hinges and properly finish the door. See "Finishing Requirements" on reverse side of page.
6. Install the lockset according to the manufacturer's instructions. Place it approximately 36" from the bottom of the door, making sure that it doesn't interfere with the operation of your entrance door lockset.
7. For Ultra-Vu and styles #11 and #50, install the door closer on the bottom portion of the door. Locate it as high on the bottom rail as possible. For all other door styles, center the closer on the lock rail below the inserts. Manufacturer's installation instructions are included.
8. Install the chain guard protector near the top of the door according to manufacturer's instructions.

Easy-Change Installation Instructions For Double Door Applications

Please read all instructions before beginning.

For proper installation of Wood Storm/Screen Doors, we recommend using the "DELUXE HARDWARE KIT" offered by The Combination Door Company. The kit includes everything you need for quick, correct installation of your new door including lockset, hinges, heavy-duty door closure, and safety chain.

1. Trim top of doors to match the top of your entryway with a fine tooth circular saw.
2. Determine full door opening width.
3. Trim doors and apply astragal (supplied by others) to the passive door. When fitting is completed an 1/8" gap should be around the top of the doors, down the sides and between the active and passive doors. The door bottoms should have a 3/16" gap. Once the doors are fitted, place shims around, between, and under doors to allow the 1/8" margins and 3/16" on the bottom.

Note: Most storm doors are outswing. Use care to install astragal properly.

4. Once the doors are fitted, place the shims around, between, and under the doors to allow the 1/8" margins and the 3/16" on the bottom.

Doors are now ready for hinge installation:

(Hinges may be surface mounted, mortised, or half-mortised.)

SURFACE MOUNTED: The hinges will be mounted flat with the screws entering from the outside of door and jamb. Place one hinge 6" from the top of the door and one hinge 6" from the bottom of the door. Make sure to maintain the 1/8" margins where specified and 3/16" at the door bottom. Mark holes and drill 1/8" pilot holes, being careful not to drill through the door. Apply the top and bottom hinges on both doors. Center the third hinge between the top and bottom hinges.

MORTISED: The hinges are mounted on the edge of each door and exterior door frame. Start by marking the top and bottom hinge locations 6" from each end on both the doors and frame. Center the third hinge. Remove the doors and set on edge. Place the hinge at each location on the edge of the door and trace. With a wood chisel, tap around the area marked, making sure not to go deeper than the thickness of the hinge. Next, chisel out the area where the hinge will be, making sure not to go deeper than the hinge thickness. The hinge should fit snugly. Repeat for remaining hinges. Drill 1/8" pilot holes and apply one hinge leaf to each mortise. Repeat procedure for the door frame. Set door in place and replace pins.

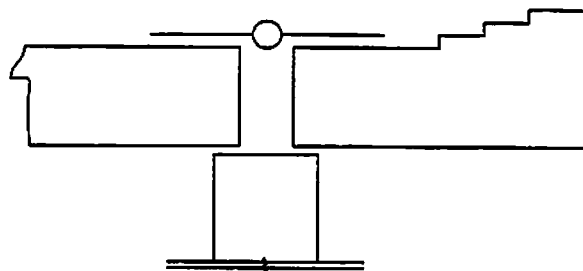
HALF-MORTISED: Use procedures from surface mounted and mortised. Pull hinge pin and reverse one leaf. Surface mount can be on either the door or the exterior trim.

5. Remove the doors from hinges and finish per instructions on reverse side of this page.
6. Install the locksets according to the manufacturer's instructions. Location should be approximately 36" from the door bottom. CAUTION: Make sure the locksets don't interfere with the operation of the entrance door locksets. Dummy knob set is installed on the passive door.

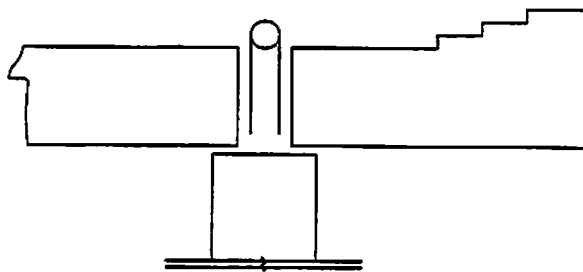
7. For Ultra-Vu and styles #11 and #50, install the door closer on the bottom portion of the active door. Locate it as high on the bottom rail as possible. For all other door styles, center the closer on the lock rail below the inserts. Manufacturer's installation instructions are included.
8. Install the chain guard protector near the top of the active door according to manufacturer's instructions.
9. Install the surface bolts on the top and bottom of the inside stile on the passive door. The strike plate can be mortised by using a wood chisel. Drill 3/32" pilot holes.

TOOLS REQUIRED:

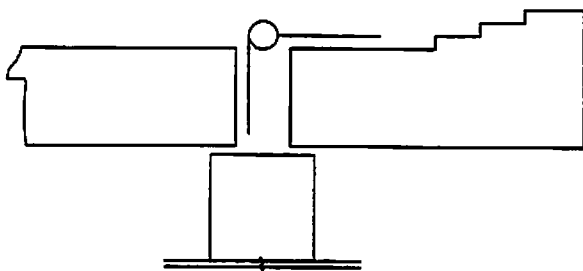
Phillips Screwdriver, Slotted Screwdriver, Wood Chisel, Drill and Bits, Hammer, Fine Tooth Circular Saw, and Plane.



Surface Mounted Hinge



Mortised Hinge



Half Mortised Hinge

Easy-Change

Wood Combination Doors

FINISHING REQUIREMENTS

Please read all instructions before beginning.

PREPARATION FOR FINISHING:

1. Hang door before finishing; then remove to finish properly.
2. Before applying the first coat of finish, lightly sand the entire surface with 180 grit sandpaper. This is to remove handling marks and finger prints.
3. After sanding, clean the door thoroughly with a tack cloth to remove all dust or foreign material. However, avoid using caustic or abrasive cleaners.
4. All surfaces of the door must be properly finished. The edges (top, sides, and especially BOTTOM) should be coated with each and every coat of finish that is applied to the exterior surface of the door. Door must be dry before finishing.
5. All Easy-Change doors are treated with a water repellent wood preservative for added protection against deterioration. This is not a finish, therefore, the door must be finished promptly after hanging.
6. For applications using Red Oak, your door may need to be refinished more than once per year. We cannot guarantee that, due to the nature of this type of wood, the door will not turn dark because of certain exposures to direct sunlight, wind, and rain. Please refer to our One-Year Limited Warranty for Easy-Change Wood Combination Doors for complete warranty guidelines.

PAINT FINISH:

Either oil-base or latex resin-base paints may be used with success. Oil base paints offer more resistance to the passage of water (liquid and vapor) than latex resin-base paints, but the latter have better durability and color retention. When using a latex resin-base paint, it is necessary to use an oil-base primer followed by the latex resin-base topcoat paint. Of course, both primer and topcoat should be made by the same manufacturer and designed to be used as a combination.

You must use one coat of primer and at least two coats of quality exterior paint. Do not use dark colors on doors exposed to direct sunlight. When finishing the sash section, apply top coat generously to bridge the wood and glass. Lap paint onto glass 1/16" to protect against moisture penetration.

STAIN AND CLEAR FINISH:

The Combination Door Company recommends the use of Sikkens brand coating. For a dealer near you, please call 1-866-SIKKENS (1-866-745-5367). www.nam.sikkens.com. This must be applied according to their instructions. Should this product be unavailable in your area or you prefer to use a product you have had good results with, please follow the recommendations below.

1. The first coat should be a stain control/presealer to allow for a more uniform acceptance of the stain.
2. The second coat should be a semi-transparent stain or clear coat that is recommended for exterior use.
3. The third and fourth coats should be a varnish or polyurethane. Sand lightly between coats. All coats must have ultra violet (UV) inhibitors in the finish. Solid base oil or latex stains are NOT acceptable as a final finish.
4. All stain-and-clear finishes will perform measurably better if protected from the direct affects of sunlight and weathering, and refinishing will not be required so frequently.

The Combination Door Company cannot evaluate all of the available systems, nor the customer's specific application requirements. It is highly recommended that top quality finishes be selected, and the application instructions on the container be followed explicitly.